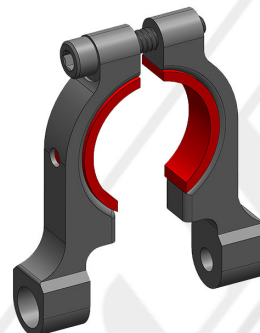
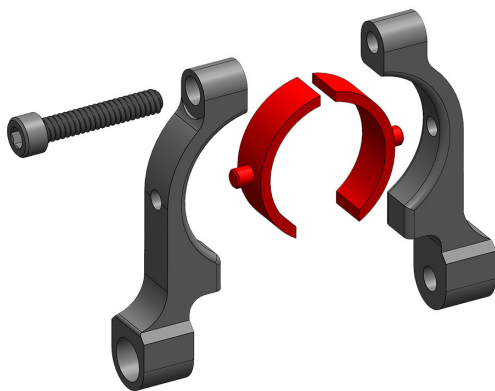



INSTALLATION INSTRUCTIONS FOR 2001R SERIES CUSTOM BUSHING.

**3/4" INNER DIAMETER
WITH BUSHINGS**

This mount was designed to fit rear view mirror stems that are 3/4" or 7/8" in diameter. If the BlendMount 2001R Series mount is too big to clamp onto your mirror stem, use the two custom bushings as shown above.

Compatible BlendMount SKUs
Radar Detector Series

BMG-2000R
 BMG-2001R
 BMX-2000R
 BMX-2001R
 BBE-2000R
 BBE-2001R

BV1-2000R
 BV1-2001R

BRD-2000R
 BRD-2001R
 BRX-2000R
 BRX-2001R
 BRT-2001R

BND-2000R
 BNR-2001R
 BR7-2001R

BK4-2000R
 BKR-2001R

BCB-2000R

Dashcam Series

BBV-2000R
 BBL-2000R

Actioncam Series

BGP-2000R